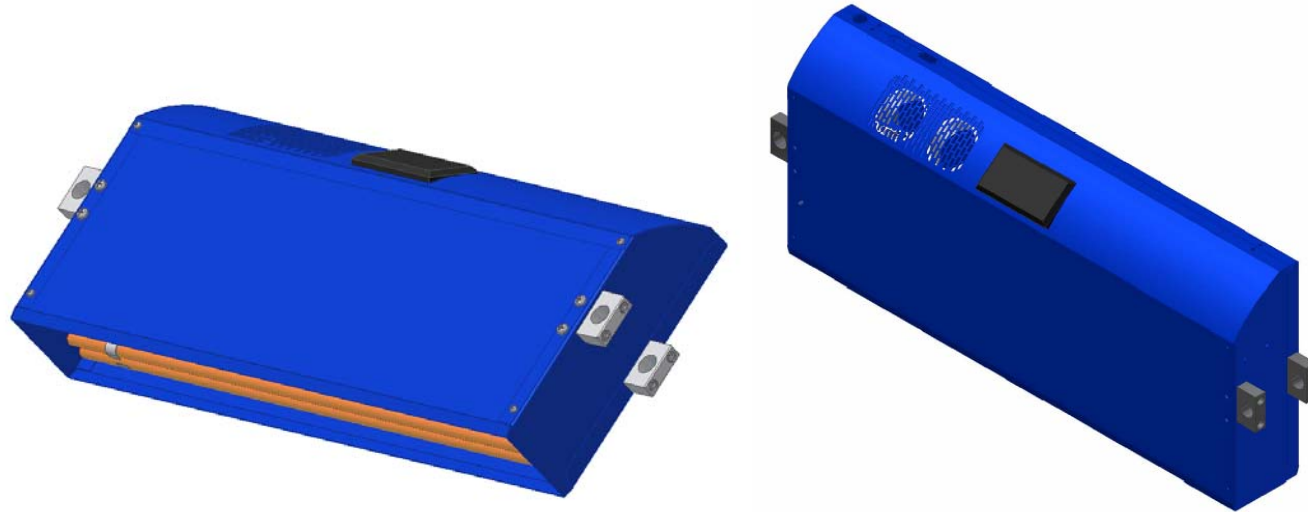


New “All in One” Single IR Dryer:

Suitable wherever only a small portion of the web width is being printed by one or a few print heads. The dryer usually covers the print width of one Inkjet head and can be moved lateral on a rail. IR drying power is automatically controlled according to the print speed. The system consists of a drying module, integrated control box and a speed sensor.



Standard drying width: 4,5" (115 mm); modular expandable in steps of 4.5" (115 mm)
Dimensions: 695 x 100 x 300mm (27.4 x 4 x 12")
Power supply: 8KW; 1 x 400 / 230 VAC; 50/60Hz; 20A