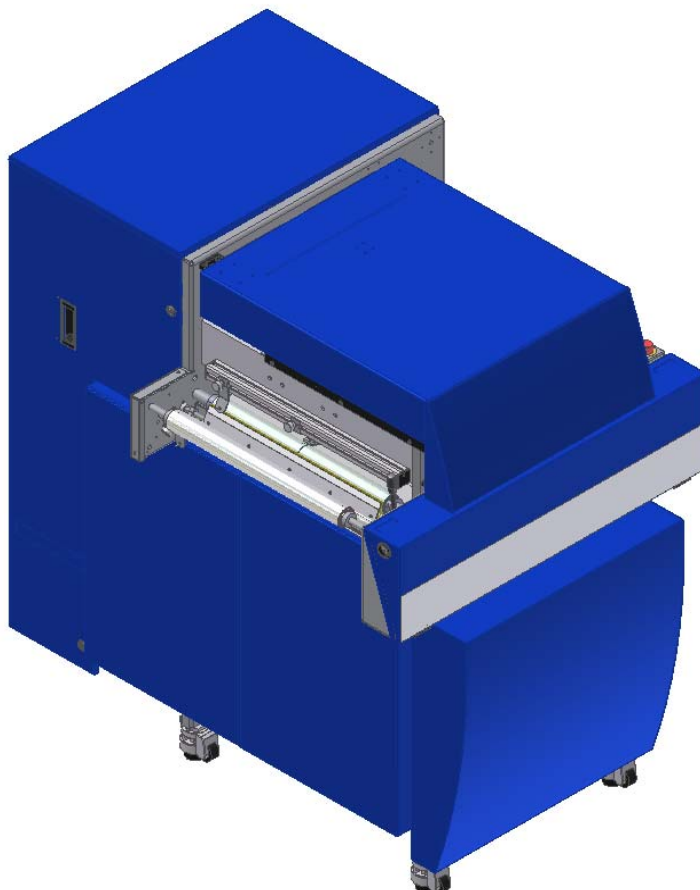


DATA RACAR®

Fully Modular and self-contained Print Tower for various high speed Inkjet printer application. It can be used either INLINE in conjunction with our full range of pre- and post processing units or integrated into various offset printing presses, finishing lines or as add-on for Color to any Laser Printer. The DataRacar® is designed to be equipped with either IR or UV Dryer or both in combination to fulfill the specific need.



Specification:

Basic configuration:	Single Tower
Basic head mounts:	2
Duplex capability:	Twin Tower and Turn bar
Minimum web wide:	200 mm (8")
Maximum web wide:	520 mm (20.5")
Weight of material:	coated or uncoated 55 – 120 gr/m ²
Operating speed	8 – 100 m/min (25 – 328 ft/m) 8 – 150 m/min (25 – 500 ft/m) optional
Web tension:	in and out with slack web, max. 20N tension
Input/output angle:	+50°, -90° to horizontal
Cue mark sensor:	closest to print head
High performance Dryer:	Flat IR-Dryer, optionally UV Dryers
Electrical specifications:	3 x 400 / 480 V; 50 / 60 Hz (+/- 5%); 50 A (D-type)
power control cabinet:	integrated
Interface:	IPDS via Ethernet, Type 1 for peripherals
Dimension:	1000 x 1400 x 1400 mm (39" x 47" x 55")
Max. crating height (for transport):	≤ 1.6m (≤ 63") to fit into a standard aircraft
Weight:	420 kg (926 pound)
Floor load:	< 230 kg per pad (< 500 lb per pad)
Noise level:	76 dB(A) peak level
Ambient temperature:	15 – 29 °C (80 – 85 deg F)
Relative Humidity, operating:	60-85 deg F (15-29°C) @ 30-60% RH
Agency compliance:	CE; UL; CSA
MTBF	2500 hours