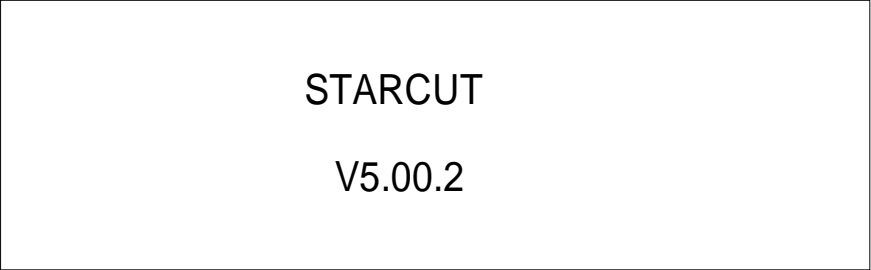


STARCUT

V5.00.2



MATTI TECHNOLOGY AG



INDICE	MODIFICACION	FECHA	DIBUJADO	VERIFICADO	APROBADO

DIBUJADO		
VERIFICADO		
FECHA DE CREACION	02-11-2006	

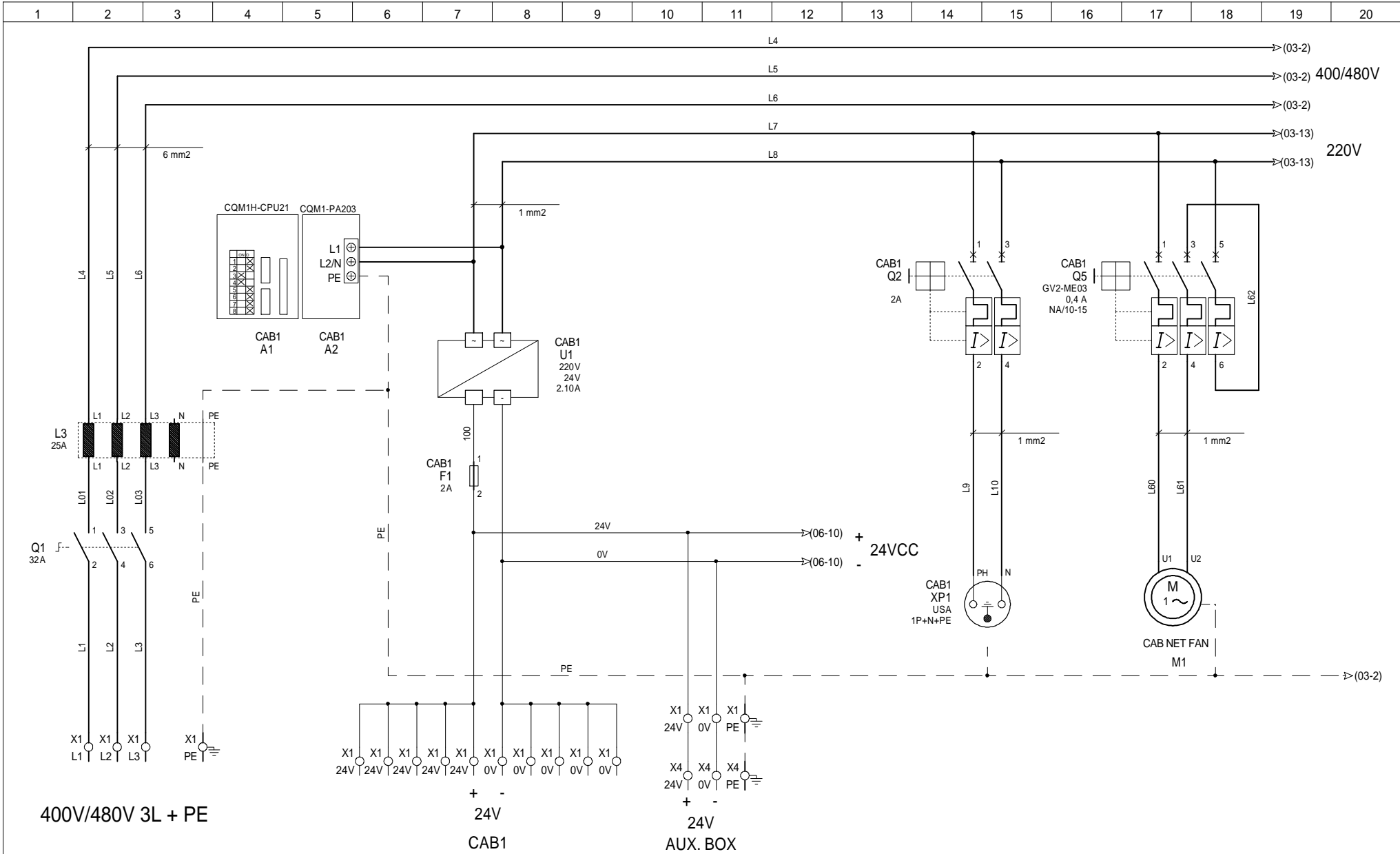
TENSIÓN ALIMENTACIÓN POWER SUPPLY	400/480V 3L+PE		
POTENCIA POWER			
FRECUENCIA FREQUENCY	50/60 Hz		
INTENSIDAD AMPERAGE	25 A		



DOCUMENTO N° : OF- 1270	00 / 39
-------------------------	---------

N° FOLIO	DESIGNACION	MODIFICACIONES								
		1	2	3	4	5	6	7	8	9
00	COVER	A								
01	SHEETS LIST	A								
02	POWER SUPPLY	A								
03	AUX. POWER SUPPLY TRANSFORMER									
04	POWER MOTORS									
06	L FT DELIVERY TABLE AC DRIVER	A								
07	SIDE VIBRATOR AC DRIVER	A								
08	DELIVERY TABLE BELTS AC DRIVER	A								
09	CHANNEL 0 INPUTS PLC	A								
10	CHANNEL 1 INPUTS PLC	A	B							
12	CHANNEL 100 OUTPUTS PLC	A								
13	CHANNEL 101 OUTPUTS PLC	A								
15	SECURITY MODULE									
16	EMERGENCY STOP	A								
17	NFEED DRIVER	A								
18	CUT DRIVER									
19	CUSTOMER RELAY	A	B							
20	INTERFACE CABLES	A								
21	SCREEN CONNECTION									
22	PHOTOCELL AND DETECTOR FOR REGISTER	A								
23	CONNECTORS LIST AUXILIARY MATERIAL									
30	ASSEMBLY PARTS									
31	TERMINAL BLOCK : X1 MAIN CABINET									
32	TERMINAL BLOCK : X1 MAIN CABINET									
33	TERMINAL BLOCK : X4 AUXILIARY BOX									
34	CONNECTOR : X25 INTERFACE CONNECTOR									
35	CONNECTOR : X31 AUX. VACUUM PUMP CONNECTOR									
36	CONNECTOR : X32 SIDE TRIM REMOVAL CONNECTOR									
37	CONNECTOR : X33 SLUGOUT CONNECTOR									
38	CONNECTOR : X40 POSITION CYLINDER DETECTOR									
39	CONNECTOR : X41 CUE MARK UP PHOTOCELL									
40	CONNECTOR : X42 CUE MARK DOWN PHOTOCELL									
41	CONNECTOR : X43 STACK CYCLE UP PHOTOCELL									
42	CONNECTOR : X44 STACK CYCLE DOWN PHOTOCELL									
43	CONNECTOR : X45 DANCER POTENTIOMETER									

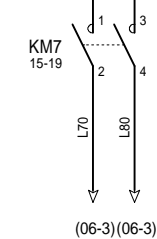
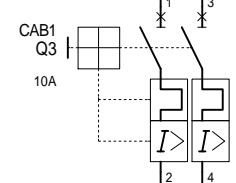
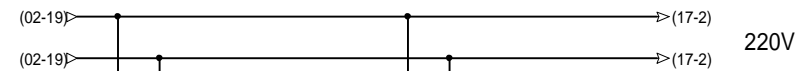
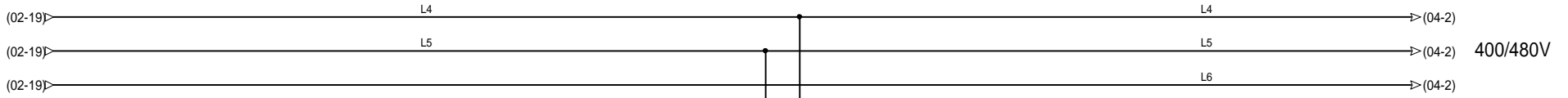
N° FOLIO	DESIGNACION	MODIFICACIONES								
		1	2	3	4	5	6	7	8	9
44	CONNECTOR : RESOLVERS RESOLVER CONNECTORS									



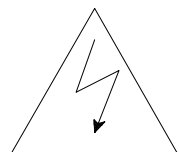
400V/480V 3L + PE

CUSTOMER CONNECTIONS

DIBUJADO :	JMS					SC52/127	STARCUT POWER SUPPLY	HOJA 02
VERIFICADO :	JMS	A	06-09-2006	Label 1P+N+PE	JMS			
FECHA CREATION :	23-11-2002	IND	FECHA	MODIFICACION	DES.			N° HOJAS 39

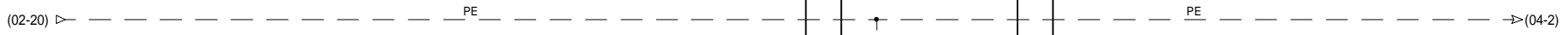


To A13, A14 and A15 Drivers

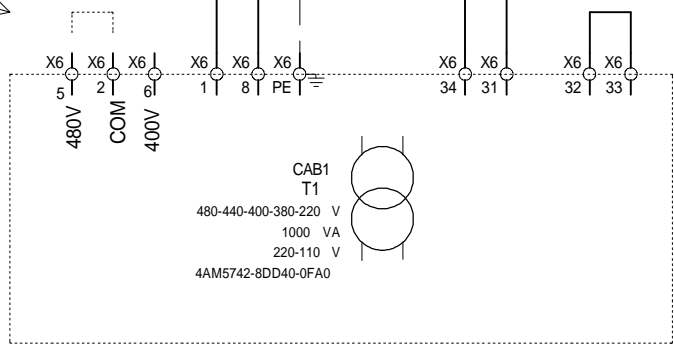


CAUTION !

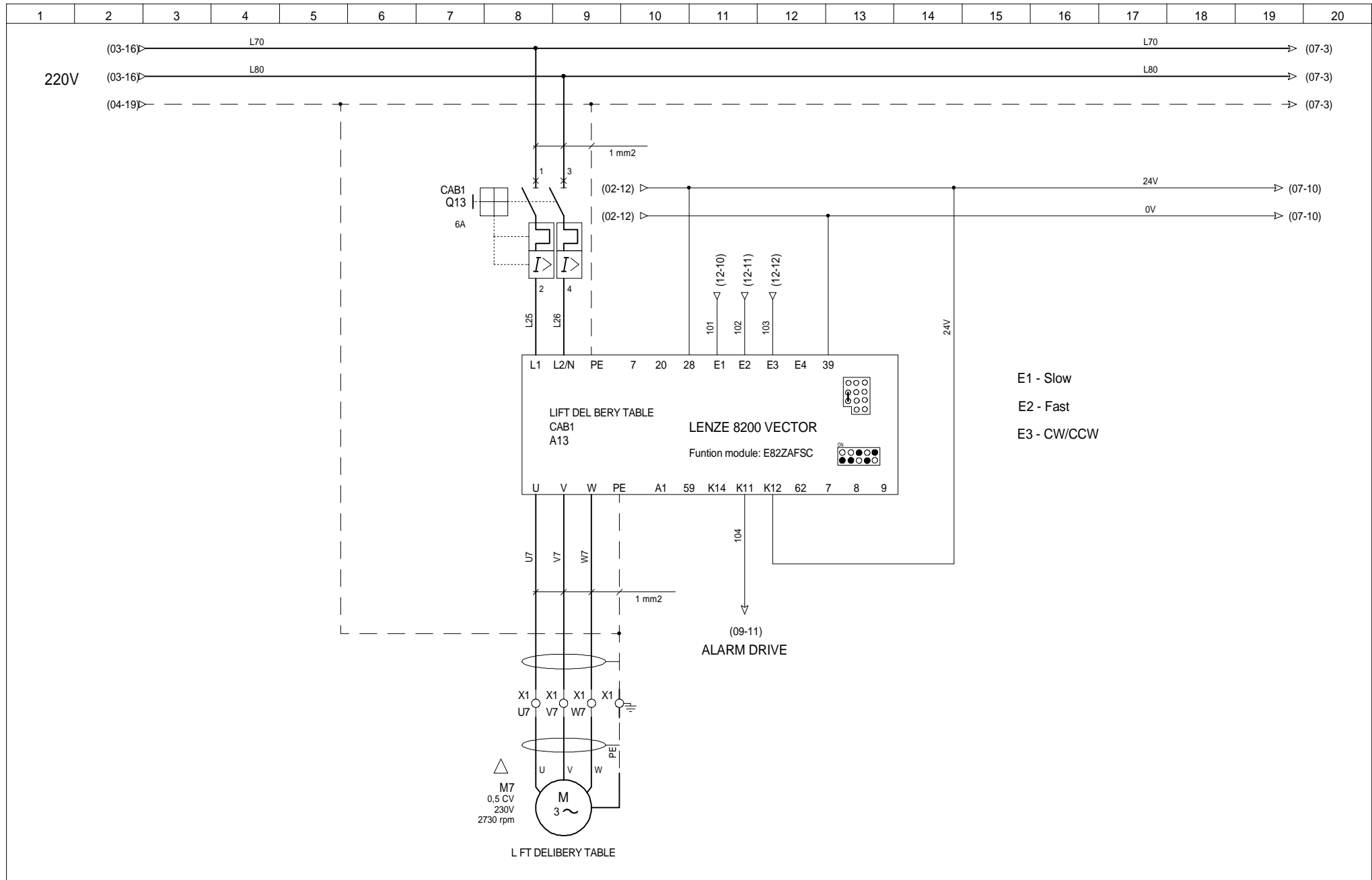
Make sure that the jumper in the terminal block corresponds to the actual supply voltage !



FOR 480V JUMPER BETWEEN TERMINAL BLOCK 5 AND 2
FOR 400V JUMPER BETWEEN TERMINAL BLOCK 6 AND 2

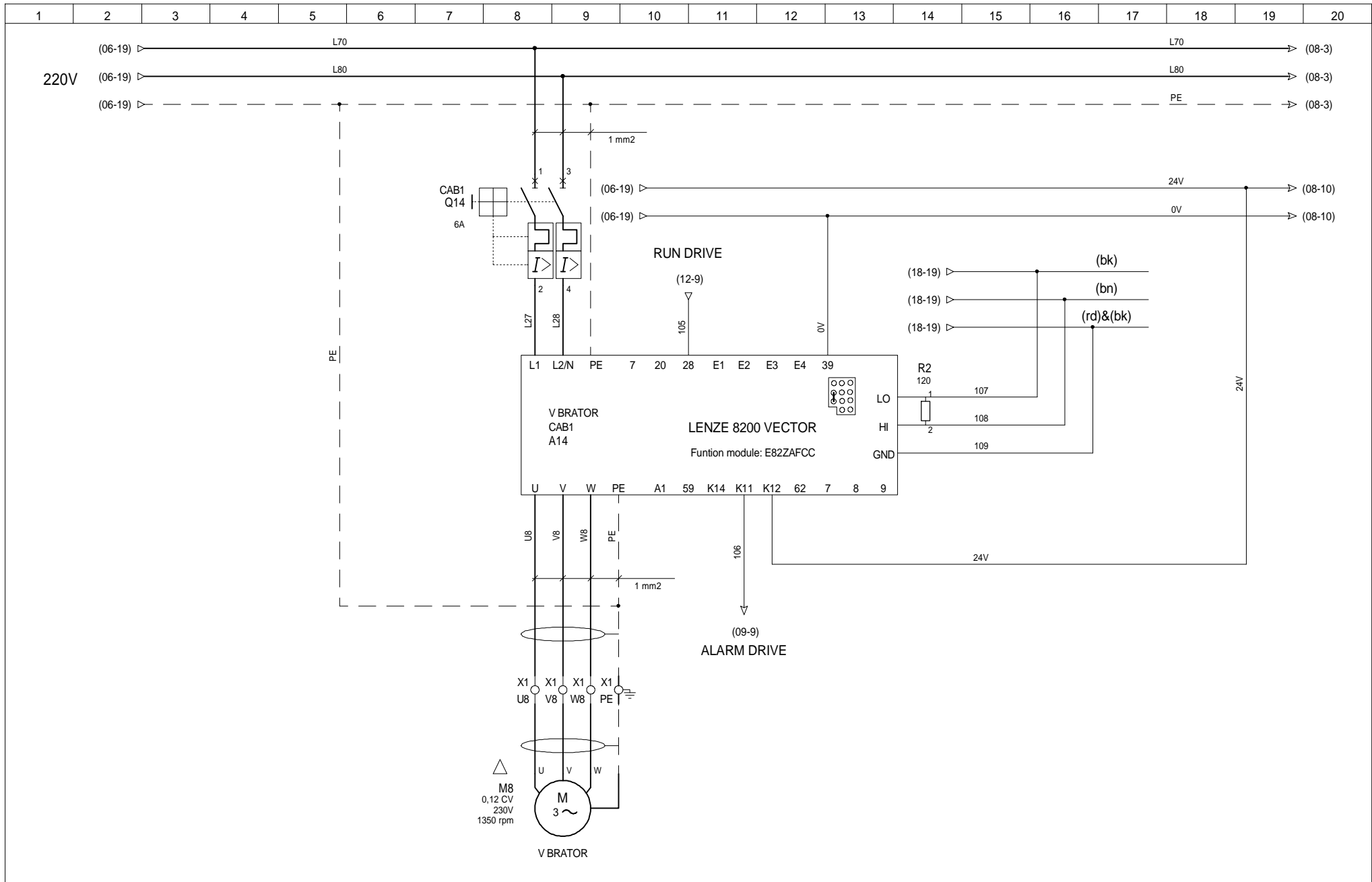


CAB1
T1
480-440-400-380-220 V
1000 VA
220-110 V
4AM5742-8DD40-0FA0



E1 - Slow
 E2 - Fast
 E3 - CW/CCW

DIBUJADO : JMS				SC52/127		STARCUT LIFT DELIVERY TABLE AC DRIVER		HOJA 06	
VERIFICADO : JMS								◀ 04 07 ▶	
FECHA CREATION : 23-11-2002		A	06-09-2006	Dip switch	J.P.	Documento n° : 1270 - 061		N° HOJAS 39	
		IND	FECHA	MODIFICACION	DES.				



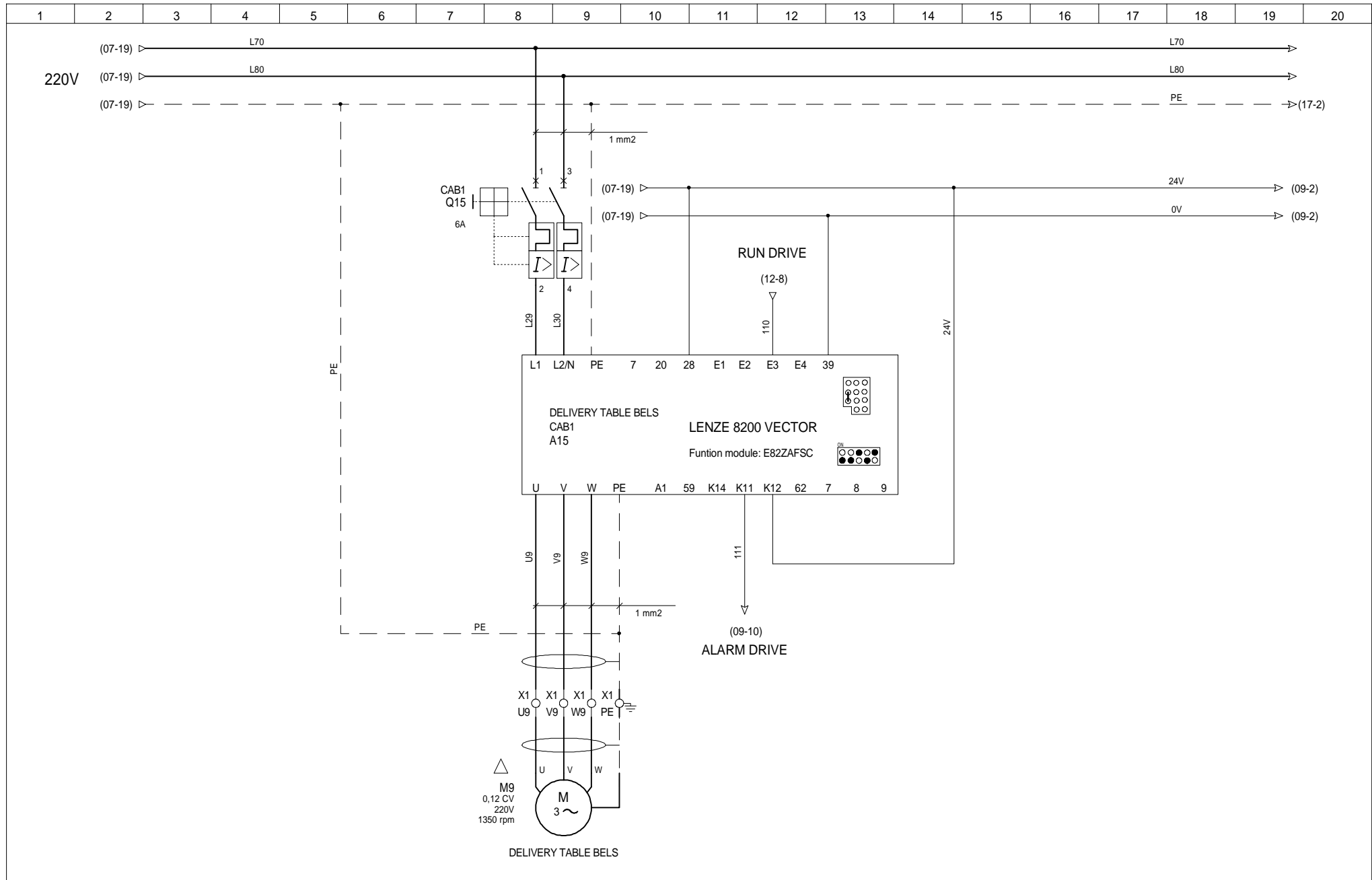
DIBUJADO :	JMS				
VERIFICADO :	JMS				
FECHA CREATION :	23-11-2002	IND	FECHA	MODIFICACION	DES.
		A	06-09-2006	Dip switch and Can resistor	J.P.

SC52/127

Documento n° : 1270 - 071

STARCUT
SIDE VIBRATOR
AC DRIVER

HOJA
07
◀06 08▶
N° HOJAS 39

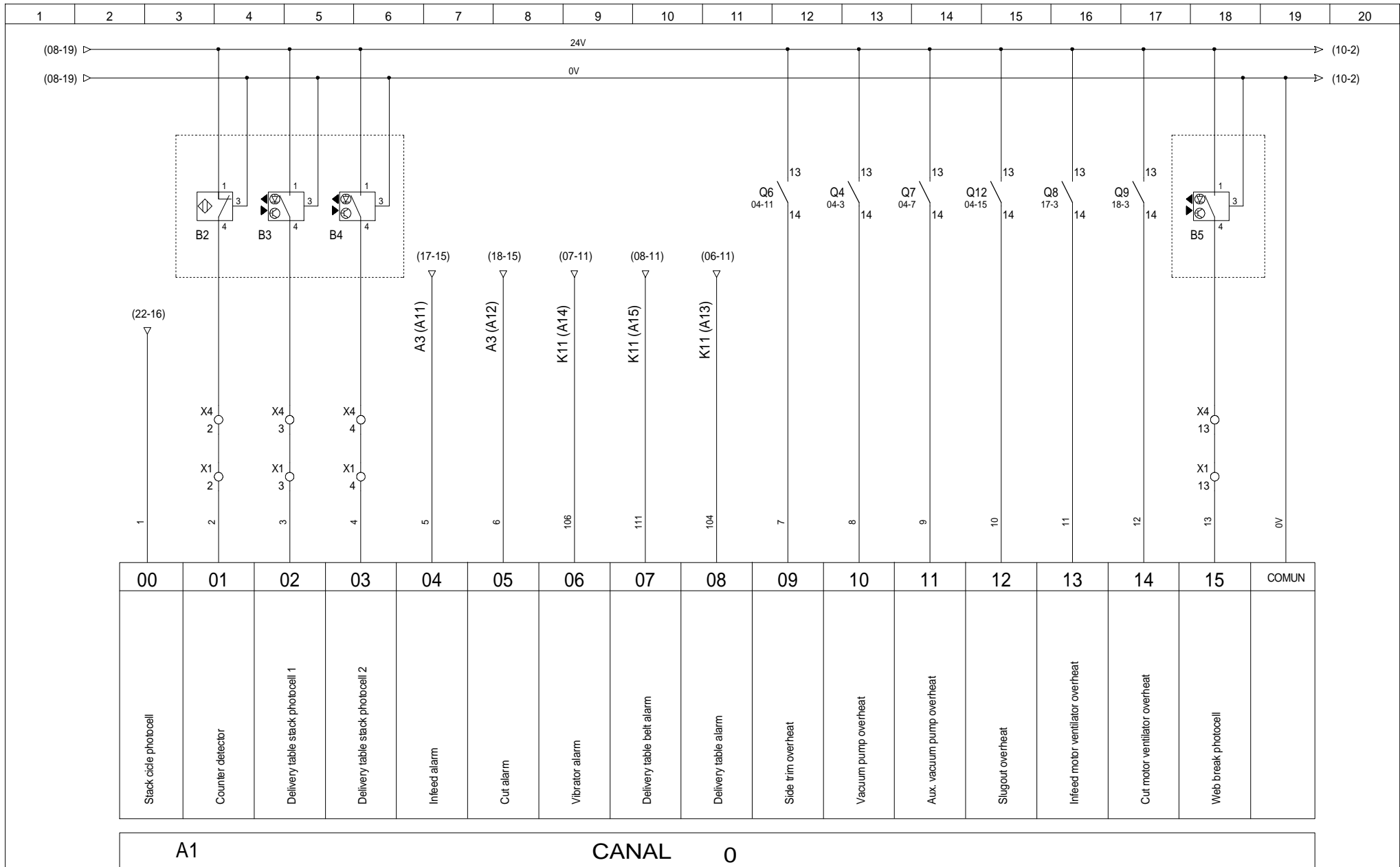


DIBUJADO :	JMS				
VERIFICADO :	JMS				
FECHA CREATION :	23-11-2002	IND	FECHA	MODIFICACION	DES.
		A	06-09-2006	Dip switch	J.P.

SC52/127

Documento n° : 1270 - 081

STARCUT
DELIVERY TABLE BELTS
AC DRIVER



A1

CANAL 0

DIBUJADO : VERIFICADO : FECHA CREATION : 23-11-2002	JMS				DES.	Documento n° : 1270 - 091	STARCUT CHANNEL 0 INPUTS PLC	HOJA 09 ◀ 08 10 ▶ N° HOJAS 39	
	JMS	A	06-09-2006	A1 reference					J.P.
	IND	FECHA		MODIFICACION					

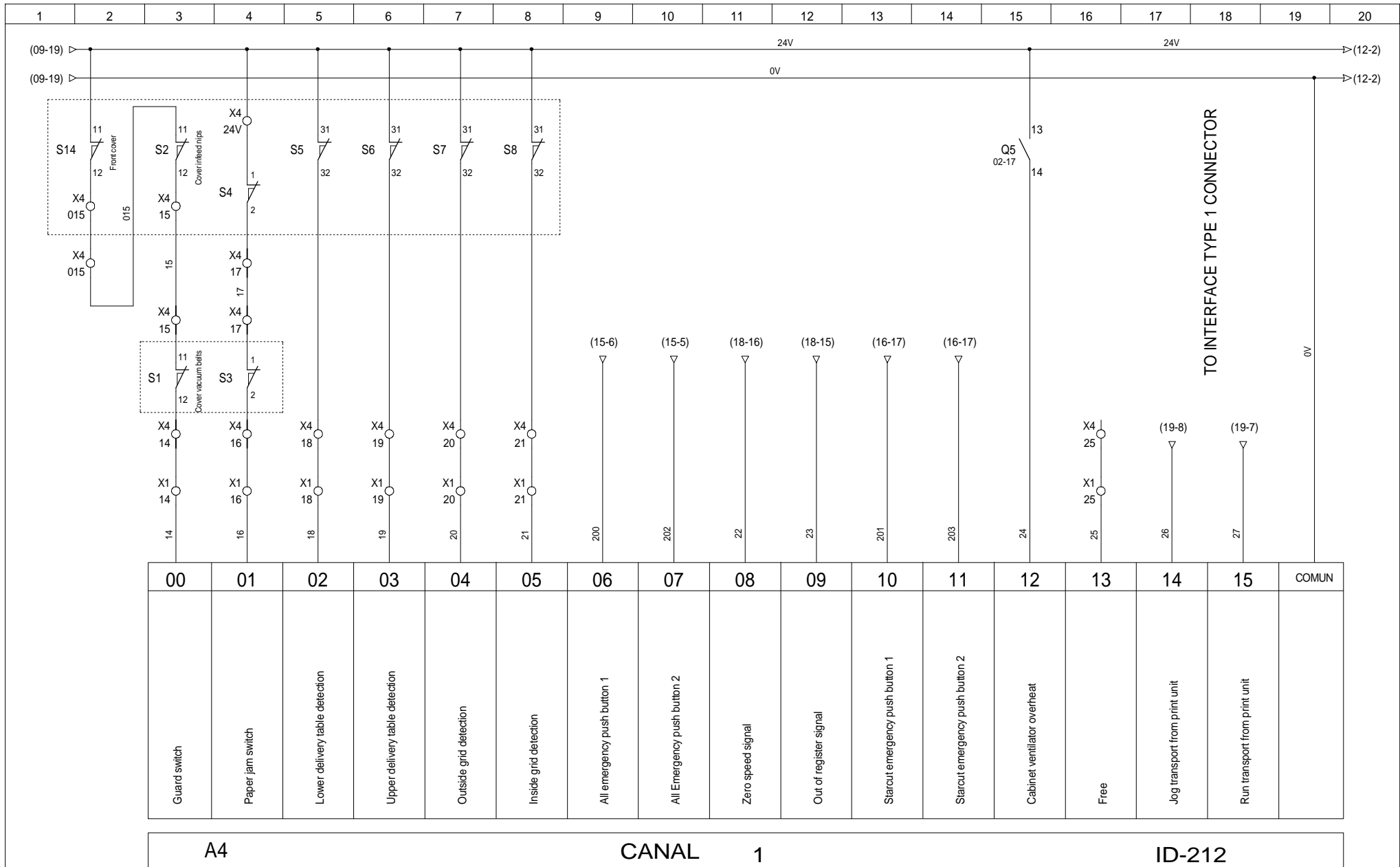
SC52/127

STARCUT
CHANNEL 0
INPUTS PLC

HOJA
09

◀ 08 10 ▶

N° HOJAS 39



A4

CANAL 1

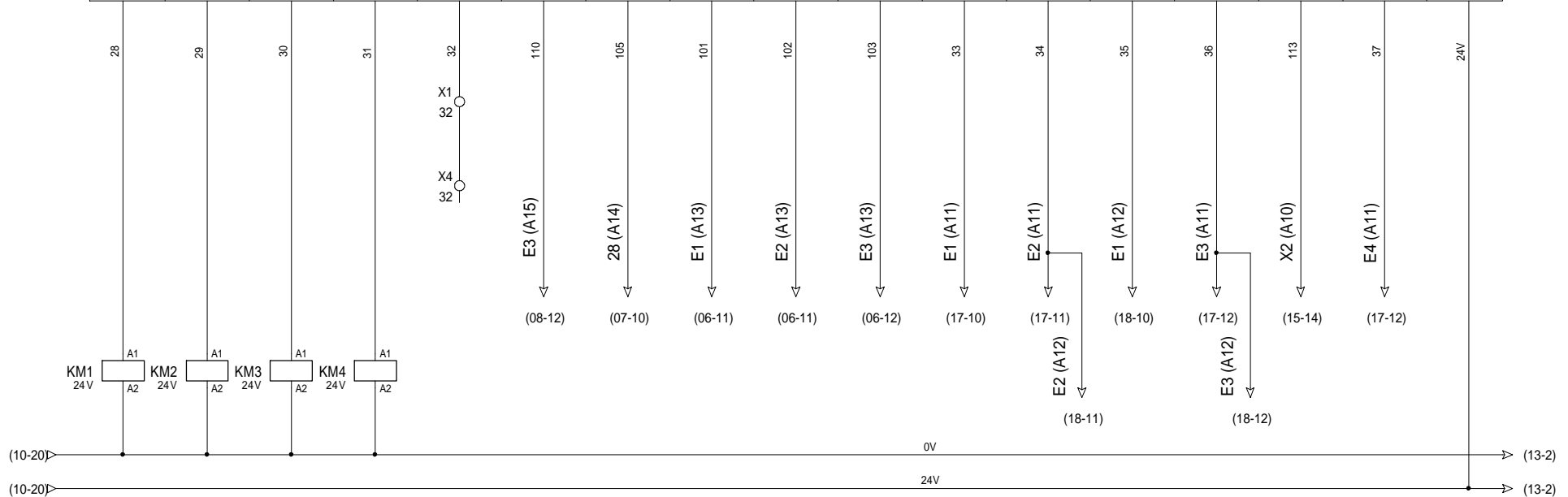
ID-212

DIBUJADO : VERIFICADO : FECHA CREATION :	JMS				SC52/127	STARCUT CHANNEL 1 INPUTS PLC	HOJA 10 ◀09 12▶ Nº HOJAS 39
	JMS	B 02-02-2007	Change switch number	JMS			
	23-11-2002	A 06-09-2006	Label changes and a4 reference	J.P.			
	IND	FECHA	MODIFICACION	DES.			

Documento nº : 1270 - 101

A6	CANAL 100	CQM1-OC222
----	-----------	------------

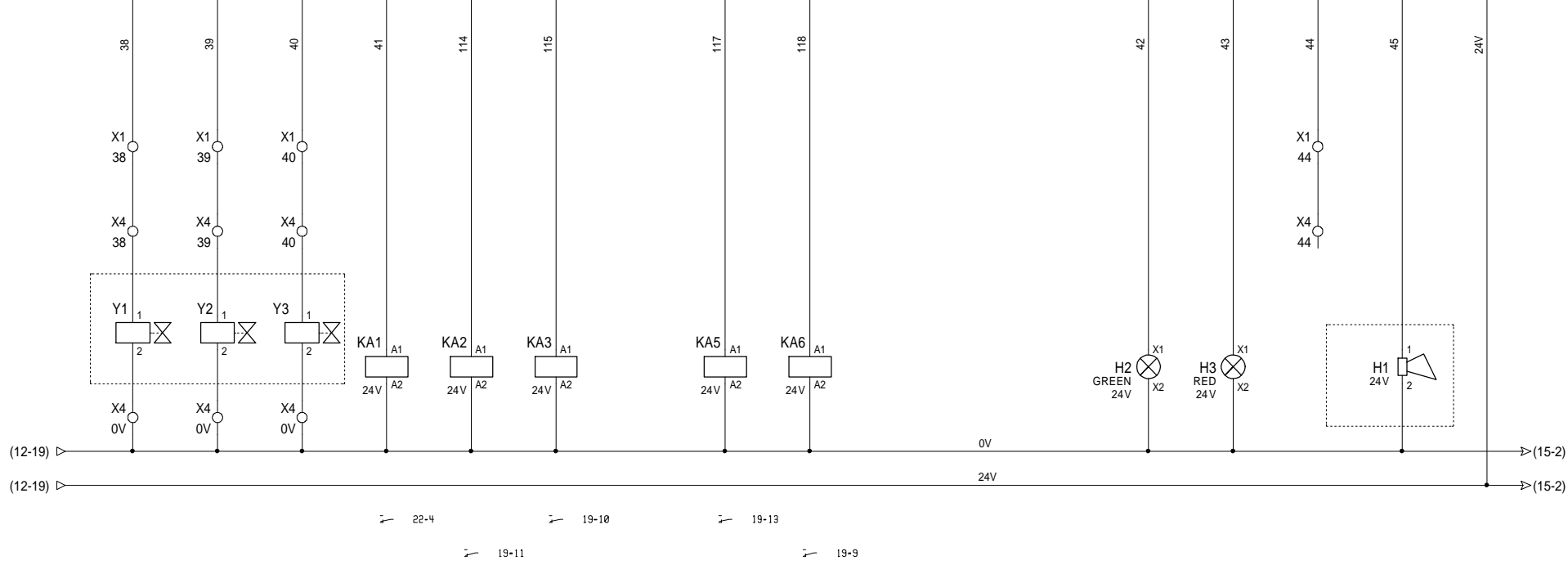
Vacuum pump contactor	Aux. vacuum pump contactor	Side trim contactor	Slugout contactor	Free	Run delivery table belt	Run vibrator	Slow speed delivery table	Fast speed delivery table	Direction speed delivery table	Infeed drive E1 QSP input	Infeed drive E2 ENCODER input	Cur drive E1 QSP input	Infeed drive E3 inch input	Reset security module	Infeed drive E4 DANCER/POTE input	COMUN
00	01	02	03	04	05	06	07	08	09	10	11	12	13	14	15	COMUN



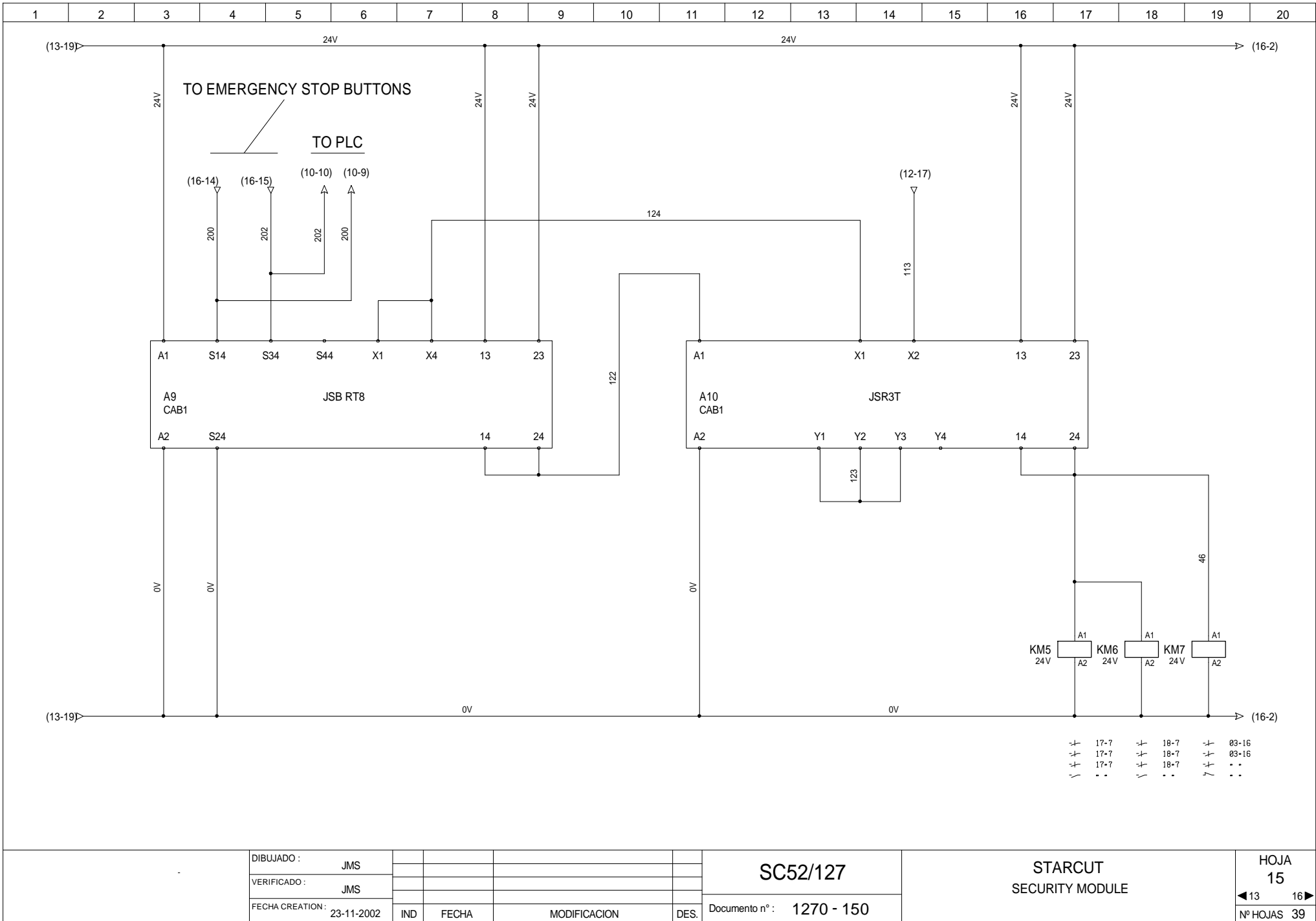
- | | | | | | | | | | | | |
|---|---|------|---|---|------|---|---|-------|---|---|-------|
| 7 | ∩ | ∅4-3 | 7 | ∩ | ∅4-7 | 7 | ∩ | ∅4-11 | 7 | ∩ | ∅4-15 |
| ∩ | ∩ | ∅4-3 | ∩ | ∩ | ∅4-7 | ∩ | ∩ | ∅4-11 | ∩ | ∩ | ∅4-15 |
| ∩ | ∩ | ∅4-3 | ∩ | ∩ | ∅4-7 | ∩ | ∩ | ∅4-11 | ∩ | ∩ | ∅4-15 |
| ∩ | ∩ | ∅4-3 | ∩ | ∩ | ∅4-7 | ∩ | ∩ | ∅4-11 | ∩ | ∩ | ∅4-15 |

A7 CANAL 101 CQM1-OC222

EV fingers	EV forks	EV ON/OFF infeed pull rollers	Cue mark On/Off relay	Free interface signal	Free interface signal	Free	StarOut READY relay	Inching relay	Free	Free	Free	Tower light green	tower light red	Free	Acoustic signal	COMUN
00	01	02	03	04	05	06	07	08	09	10	11	12	13	14	15	COMUN



TOWER LIGHT

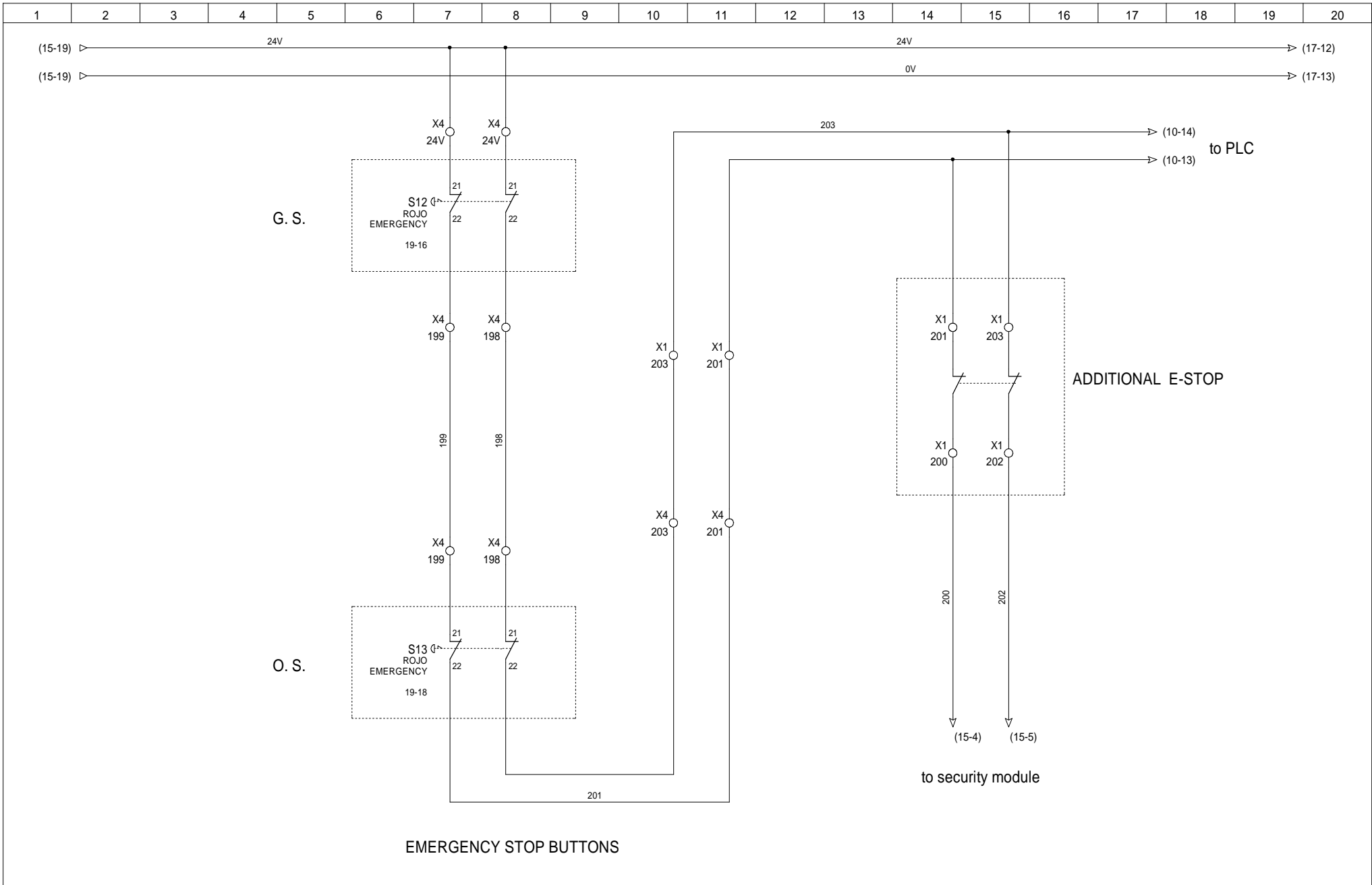


DIBUJADO :	JMS				
VERIFICADO :	JMS				
FECHA CREATION :	23-11-2002	IND	FECHA	MODIFICACION	DES.

SC52/127

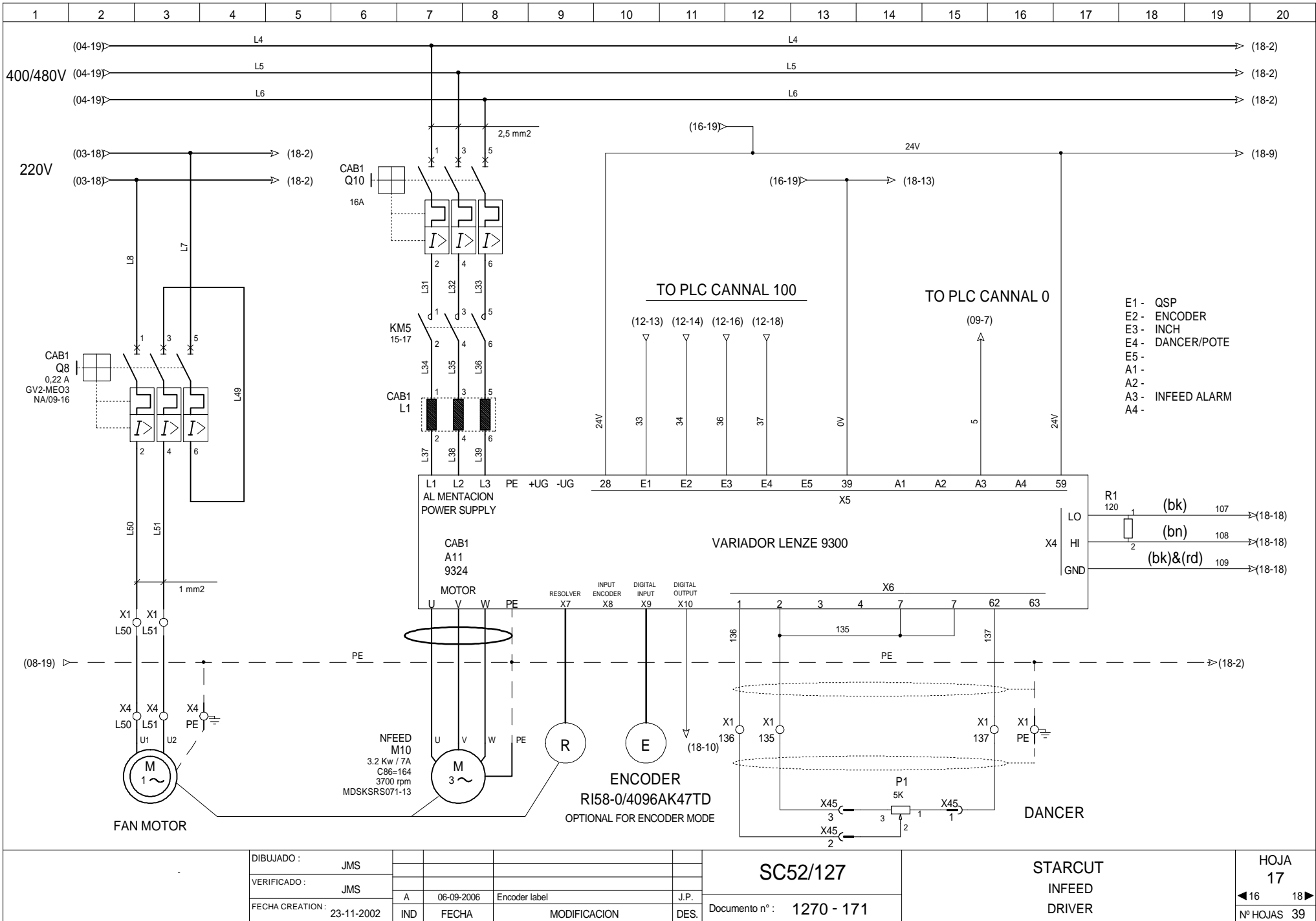
Documento n° : 1270 - 150

STARCUT
SECURITY MODULE



EMERGENCY STOP BUTTONS

	DIBUJADO :	JMS				SC52/127	STARCUT EMERGENCY STOP	HOJA 16 ◀ 15 17 ▶	
	VERIFICADO :	JMS	A	06-09-2006	Labels changes				J.P.
	FECHA CREATION :	23-11-2002	IND	FECHA	MODIFICACION				DES.
Documento n° : 1270 - 161							N° HOJAS 39		

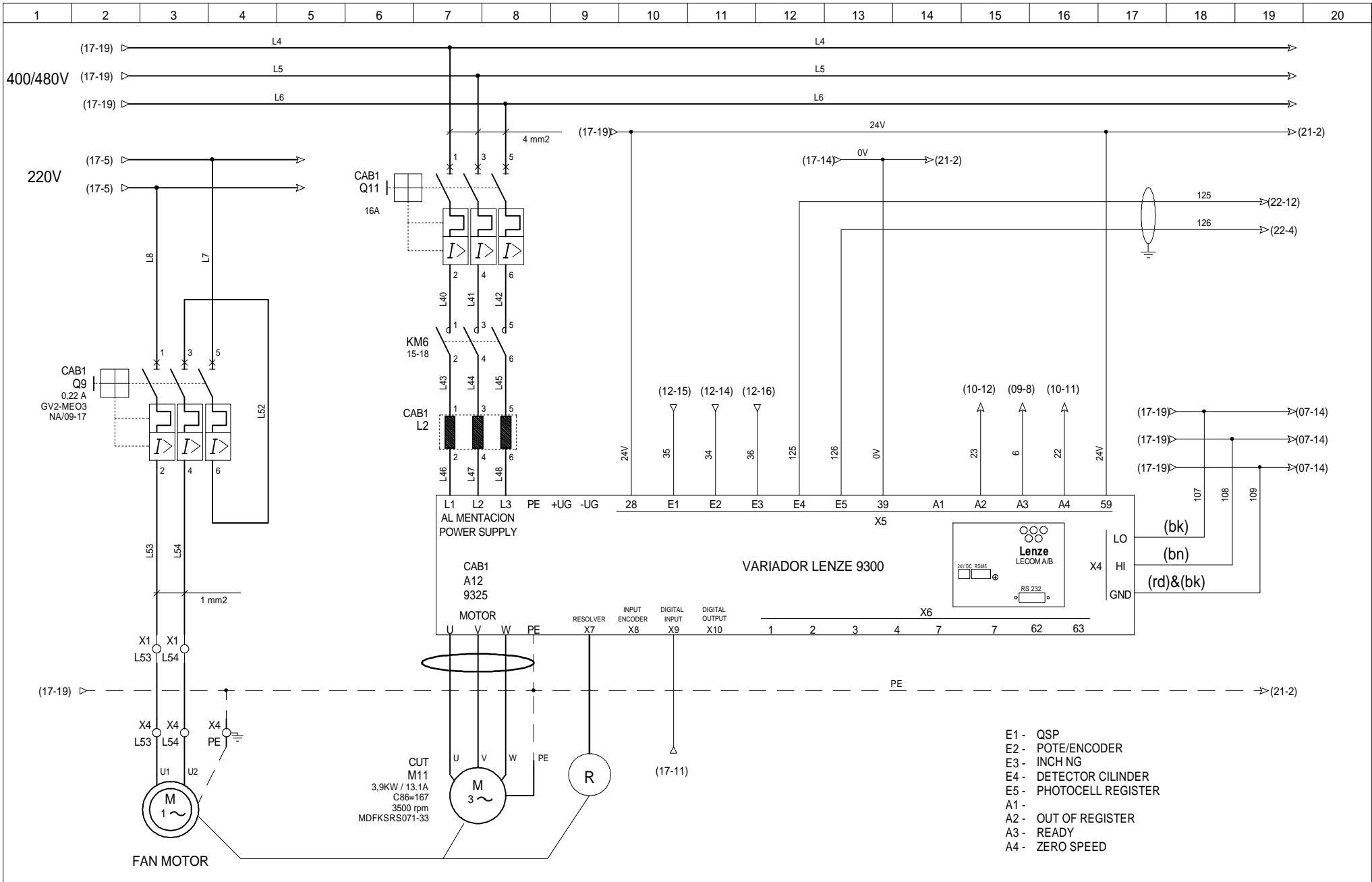


DIBUJADO :	JMS				
VERIFICADO :	JMS				
FECHA CREATION :	23-11-2002	IND	FECHA	MODIFICACION	DES.

SC52/127

Documento n° : 1270 - 171

STARCUT
 INFEEED
 DRIVER

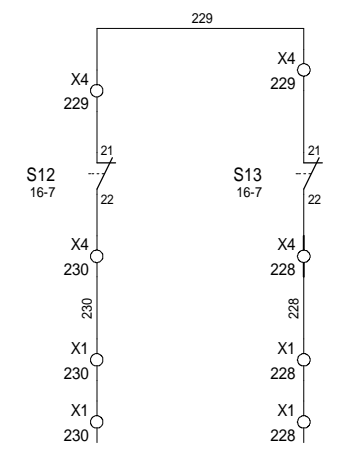
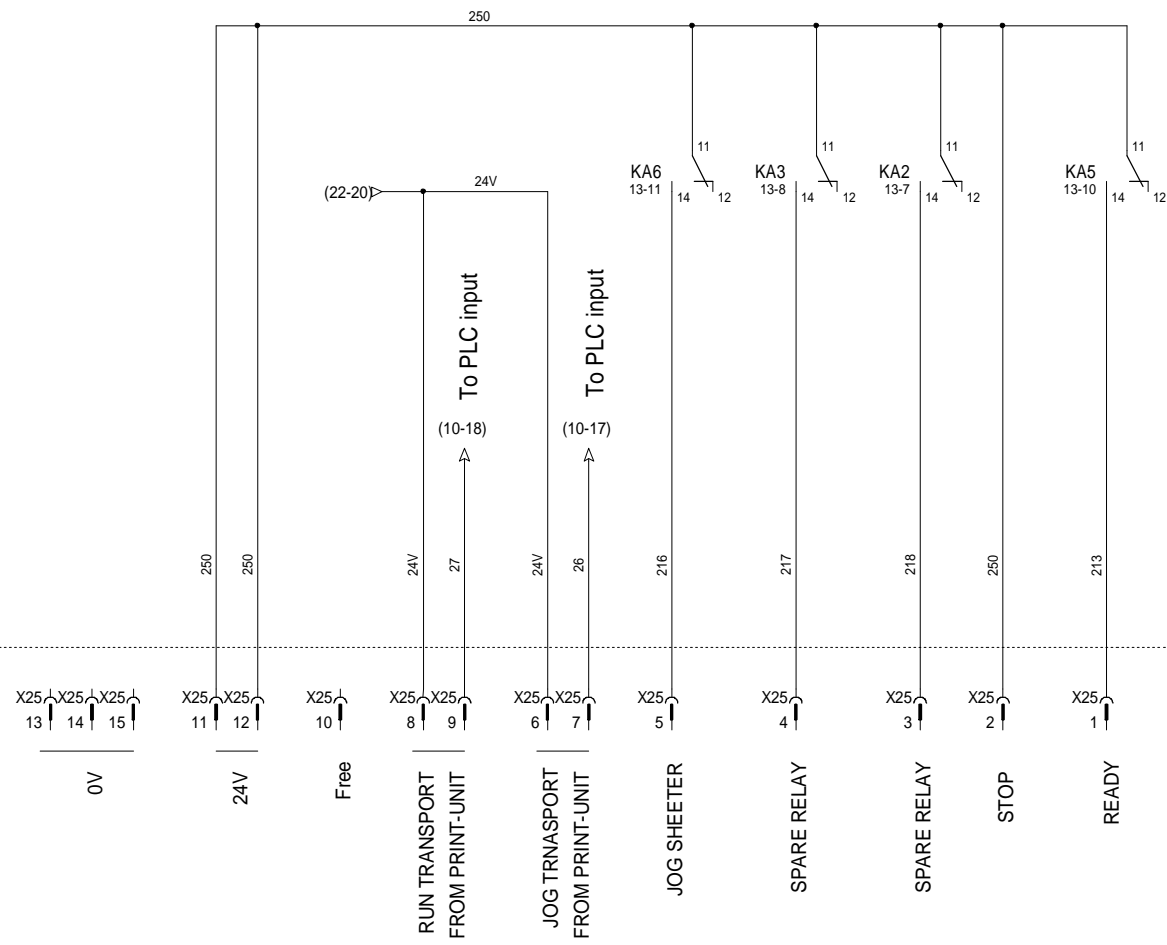


DIBUJADO :	JMS				
VERIFICADO :	JMS				
FECHA CREATION :	23-11-2002	IND	FECHA	MODIFICACION	DES.

SC52/127

Documento n° : 1270 - 180

STARCUT
CUT
DRIVER



Emergency push button

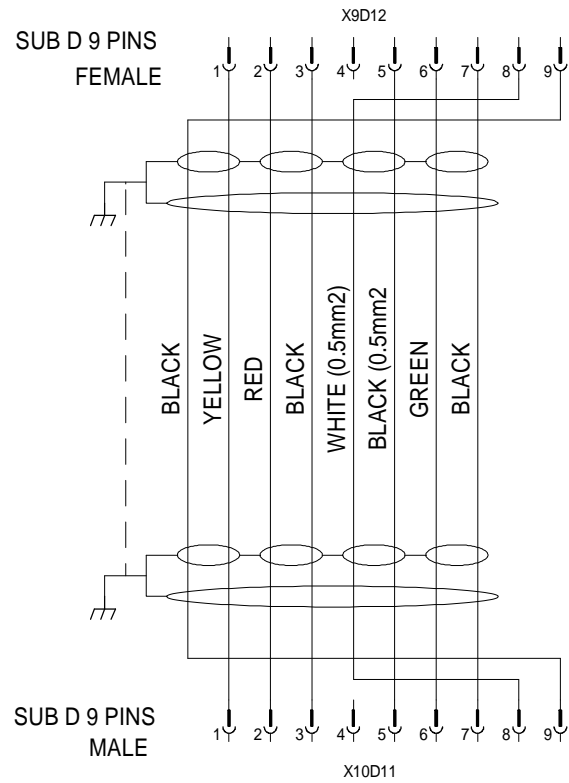
D-sub 15 pins female connector on control cabinet

CONNECTION PRINT-UNIT (Type 1)

DIBUJADO : VERIFICADO : FECHA CREATION :	JMS				SC52/127	STARCUT CUSTOMER RELAY	HOJA 19	
	JMS	B	06-09-2006	Labels change				J.P.
	23-11-2002	A	23-09-2003	Cable interface				J.M.S.
	IND	FECHA		MODIFICACION	DES.	Documento n° : 1270 - 191	◀ 18 20 ▶ N° HOJAS 39	

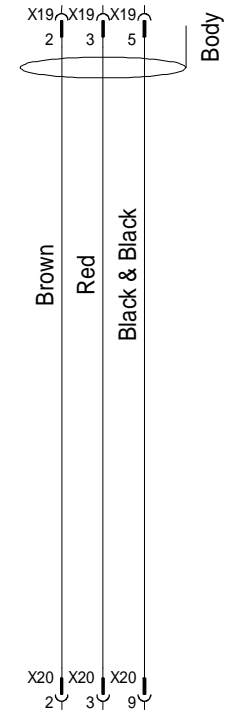
LENZE DRIVER INTERFACE CONNECTORS

BETWEEN CUTTER AND INFEED
LENZE DRIVER X9 CONNECTOR



LENZE DRIVER X10 CONNECTOR

LENZE
LECOM A/B
SUB-D-9P MALE



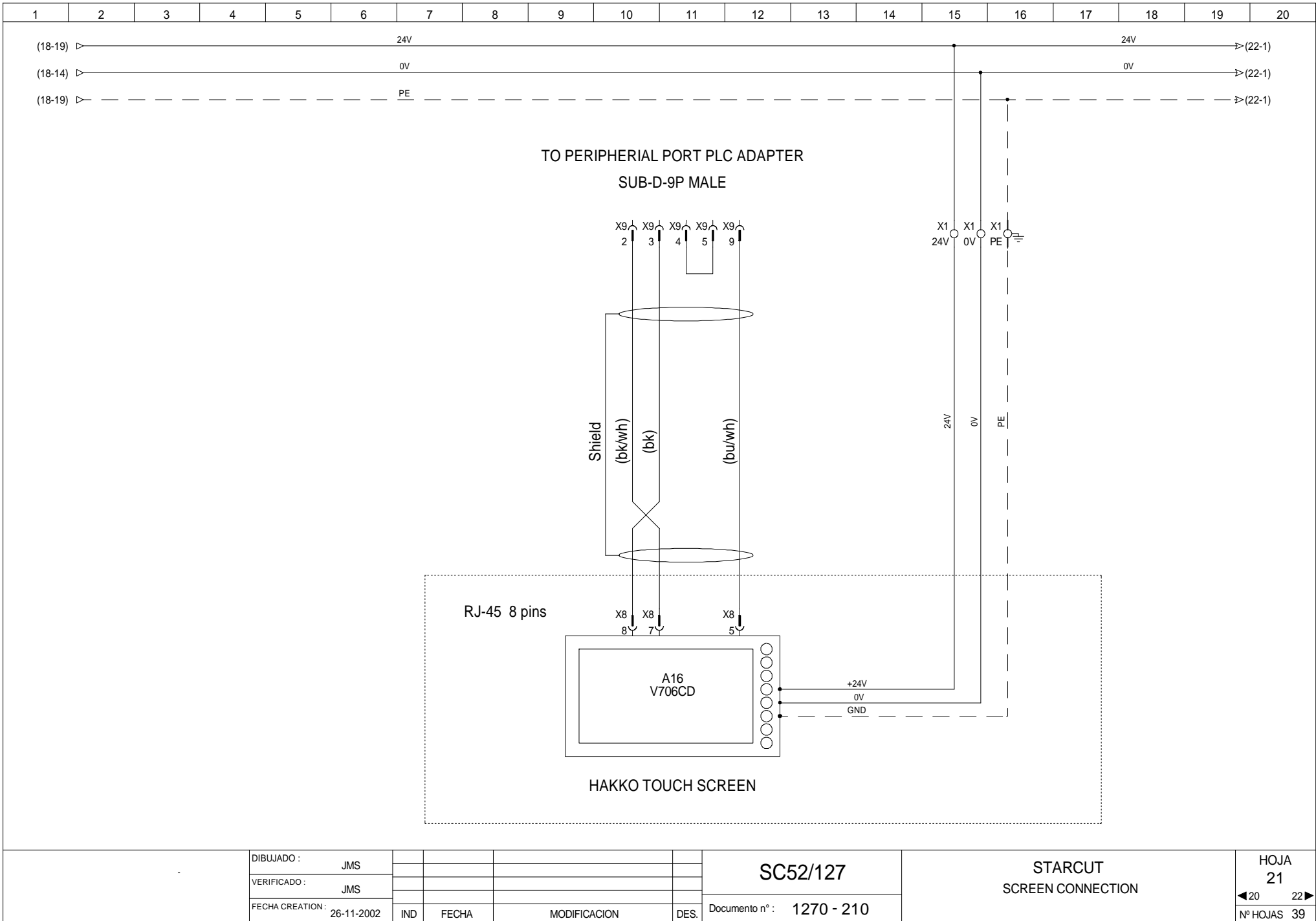
CQM1 RS232C
SUB-D-9P MALE

DIBUJADO :	JMS				
VERIFICADO :	JMS				
FECHA CREATION :	23-11-2002	IND	FECHA	MODIFICACION	DES.

SC52/127

Documento n° : 1270 - 201

STAR CUT
INTERFACE CABLES

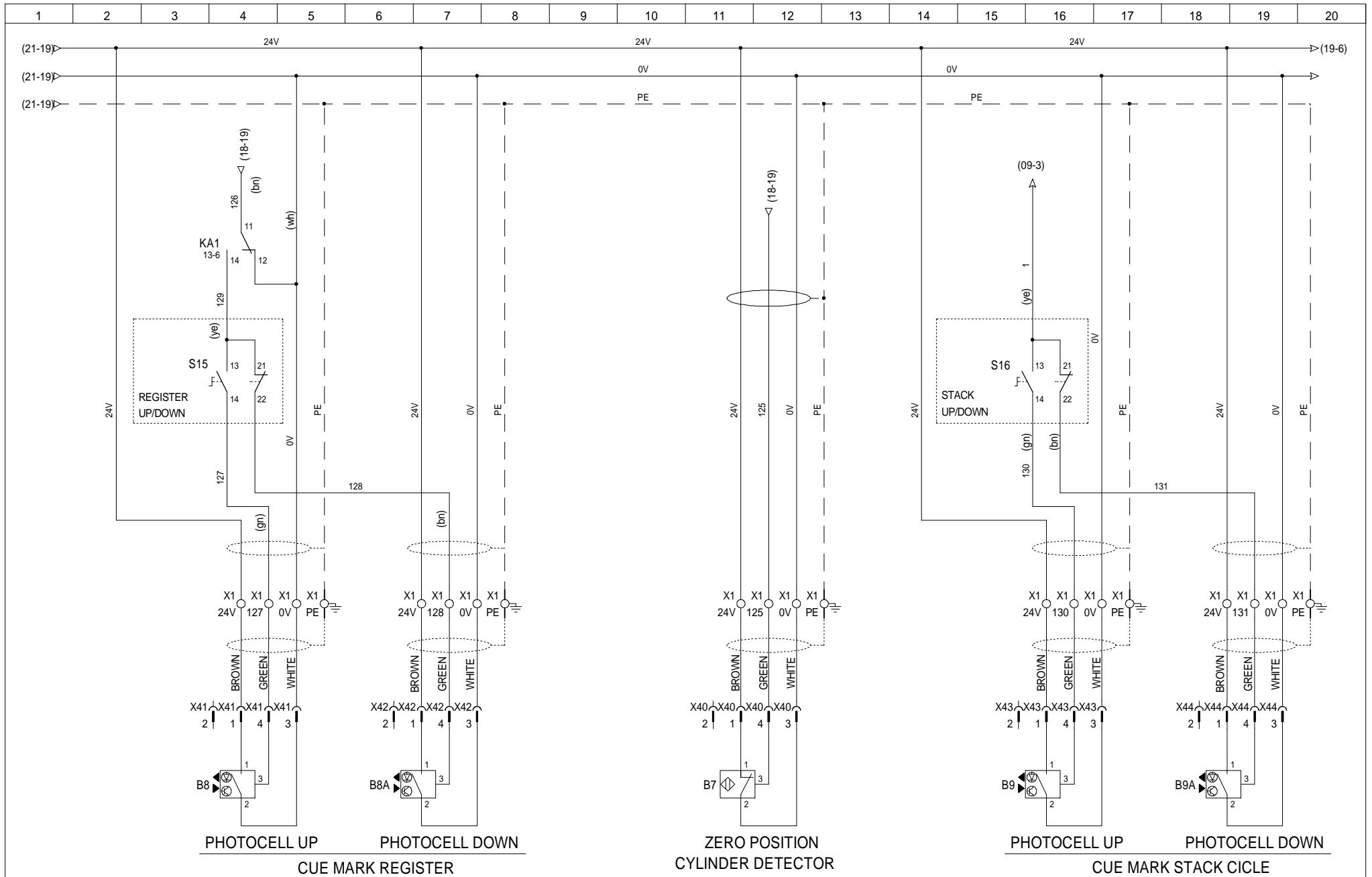


DIBUJADO :	JMS				
VERIFICADO :	JMS				
FECHA CREATION :	26-11-2002	IND	FECHA	MODIFICACION	DES.

SC52/127

Documento n° : 1270 - 210

**STARCUT
SCREEN CONNECTION**



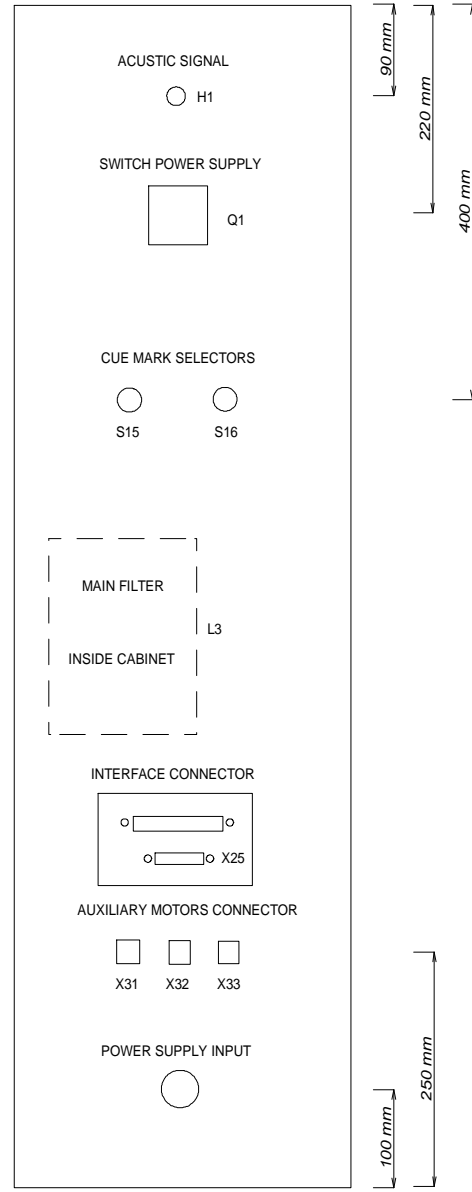
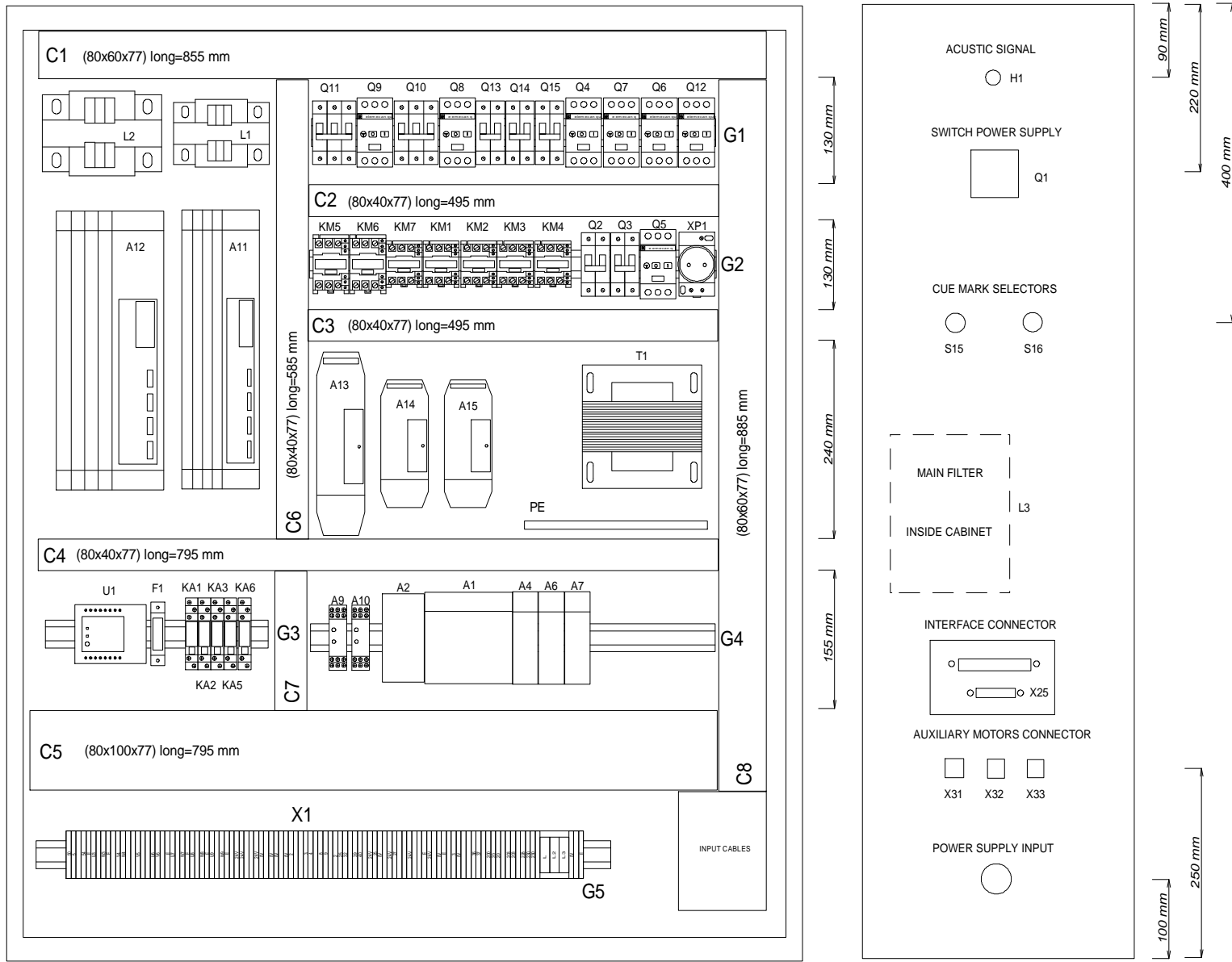
DIBUJADO : JMS VERIFICADO : JMS FECHA CREATION : 01-12-2002					SC52/127 Documento n° : 1270 - 221	STARCUT PHOTOCELL AND DETECTOR FOR REGISTER	HOJA
	A	06-09-2006	Labels change	J.P.			22
	IND	FECHA	MODIFICACION	DES.			◀ 21 23 ▶
						N° HOJAS 39	

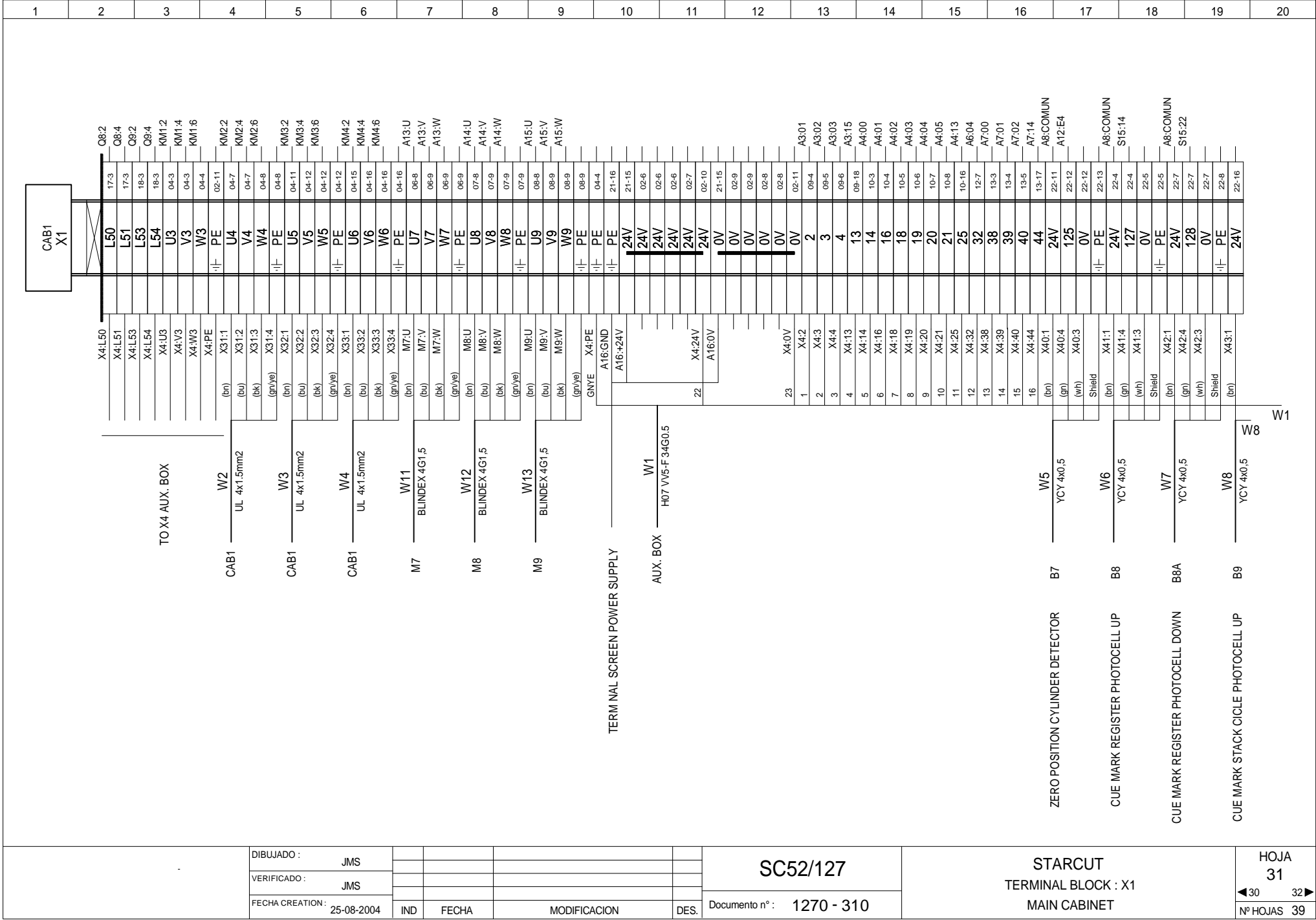
CONNECTORS LIST

X1	TERMINAL BLOCKS MAIN CABINET	X20		X40	POSITION CYLINDER DETECTOR
X2		X21		X41	CUE MARK UP PHOTOCELL
X3		X22		X42	CUE MARK DOWN PHOTOCEL
X4	TERMINAL BLOCK AUX BOX	X23		X43	STACK CICLE UP PHOTOCELL
X5		X24		X44	STACK CICLE DOWN PHOTOCELL
X6	TRANFORMATORE	X25	INTERFACE CONNECTOR	X45	DANCER CONNECTOR
X7					
X8	TERMINAL TOUCH SCREEN				
X9	PLC PERIPHERIAL PORT				
X10		X30			
X11		X31	AUX. VACUUM PUMP MOTOR		
X12		X32	SIDE TRIM REMOVAL MOTOR		
X13		X33	SLUGOUT MOTOR		
X14		X34			
X15		X35			
X16		X36			

RIT1505210	RA4
A17	A18

CAB1 AK1650-600

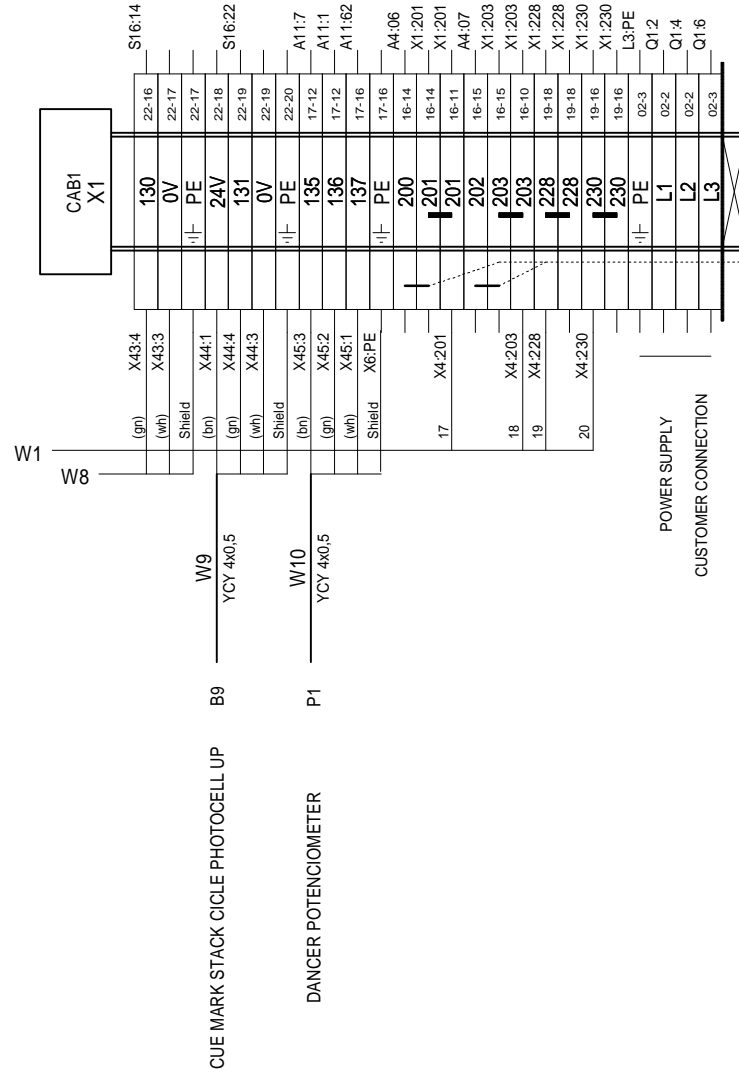




DIBUJADO :	JMS				
VERIFICADO :	JMS				
FECHA CREATION :	25-08-2004	IND	FECHA	MODIFICACION	DES.

SC52/127
Documento n° : 1270 - 310

STARCUT
TERMINAL BLOCK : X1
MAIN CABINET



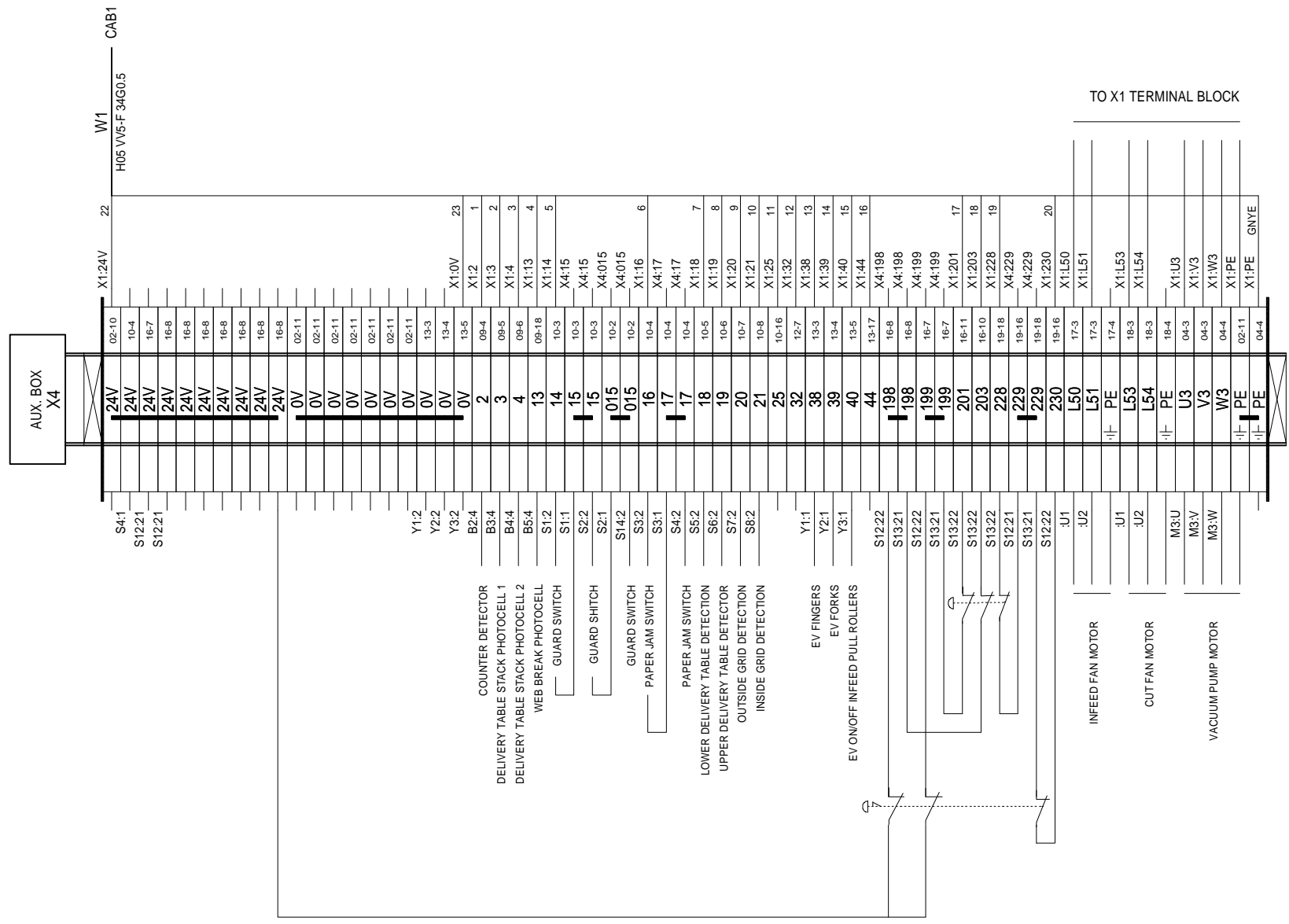
REMOVE THE JUMPER WHEN CONNECTING EXTERNAL EMERGENCY

DIBUJADO :	JMS				
VERIFICADO :	JMS				
FECHA CREATION :	25-08-2004	IND	FECHA	MODIFICACION	DES.

SC52/127

Documento n° : 1270 - 320

STAR CUT
TERMINAL BLOCK : X1
MAIN CABINET

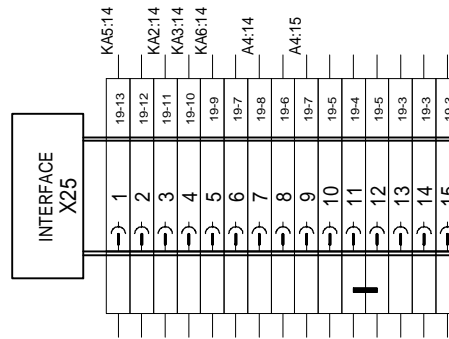


DIBUJADO :	JMS				
VERIFICADO :	JMS				
FECHA CREATION :	11-06-2004	IND	FECHA	MODIFICACION	DES.

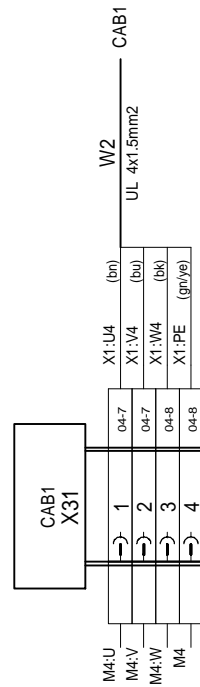
SC52/127

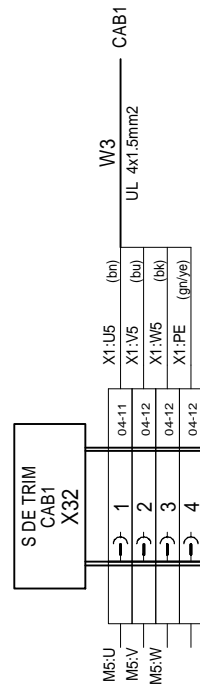
Documento nº : 1270 - 330

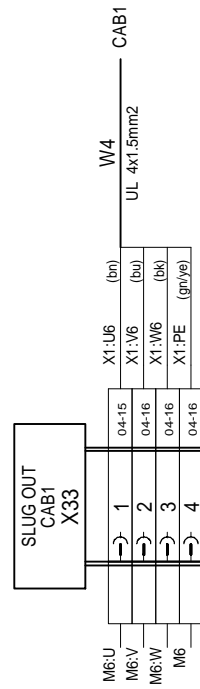
STARCUT
TERMINAL BLOCK : X4
AUXILIAR BOX



D-sub 15 pins female connector
 PRINT-UNIT (Type 1) interface





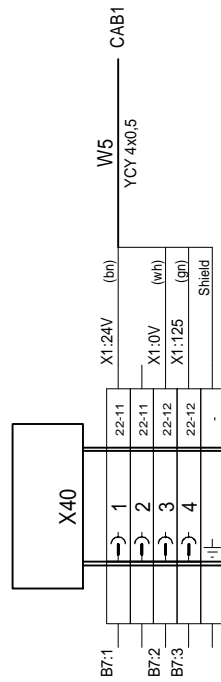


DIBUJADO :	JMS				
VERIFICADO :	JMS				
FECHA CREATION :	14-06-2004	IND	FECHA	MODIFICACION	DES.

SC52/127

Documento n° : 1270 - 370

STARCUT
CONNECTOR : X33
SLUGOUT CONNECTOR

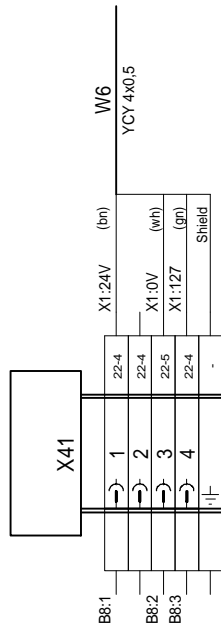


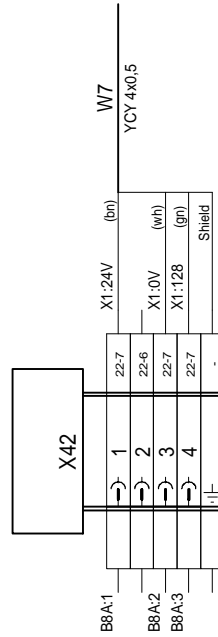
DIBUJADO :	JMS				
VERIFICADO :	JMS				
FECHA CREATION :	14-06-2004	IND	FECHA	MODIFICACION	DES.

SC52/127

Documento n° : 1270 - 380

STARCUT
CONNECTOR : X40
POSITION CYLINDER DETECTOR



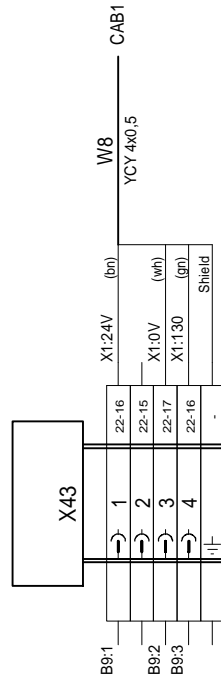


DIBUJADO :	JMS				
VERIFICADO :	JMS				
FECHA CREATION :	14-06-2004	IND	FECHA	MODIFICACION	DES.

SC52/127

Documento n° : 1270 - 400

STARCUT
CONNECTOR : X42
CUE MARK DOWN PHOTOCCELL

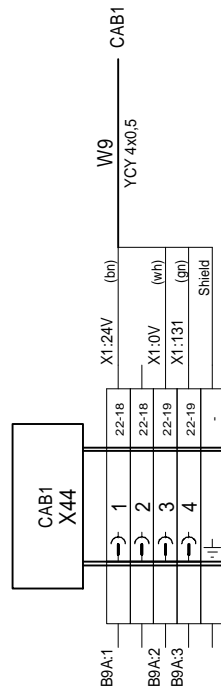


DIBUJADO :	JMS				
VERIFICADO :	JMS				
FECHA CREATION :	14-06-2004	IND	FECHA	MODIFICACION	DES.

SC52/127

Documento n° : 1270 - 410

STAR CUT
CONNECTOR : X43
STACK CICLE UP PHOTOCELL

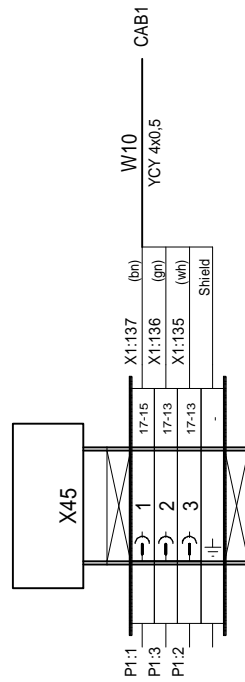


DIBUJADO :	JMS				
VERIFICADO :	JMS				
FECHA CREATION :	14-06-2004	IND	FECHA	MODIFICACION	DES.

SC52/127

Documento n° : 1270 - 420

STARCUT
CONNECTOR : X44
STACK CICLE DOWN PHOTOCCELL



DIBUJADO :	JMS				
VERIFICADO :	JMS				
FECHA CREATION :	14-06-2004	IND	FECHA	MODIFICACION	DES.

SC52/127

Documento n° : 1270 - 430

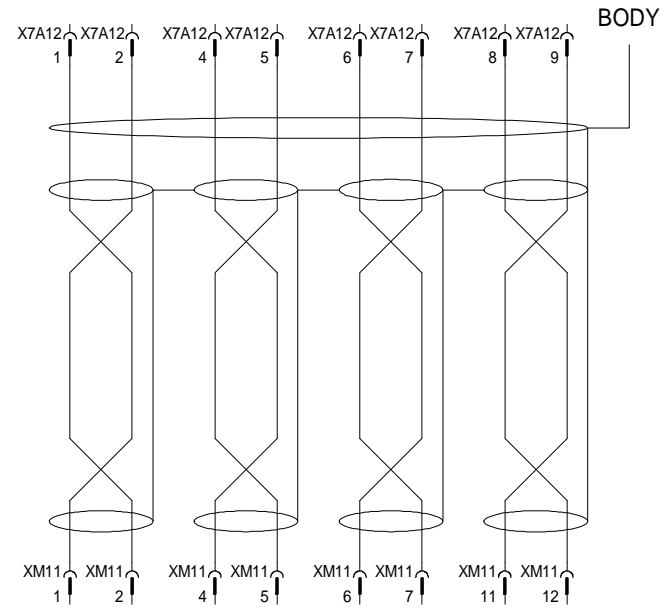
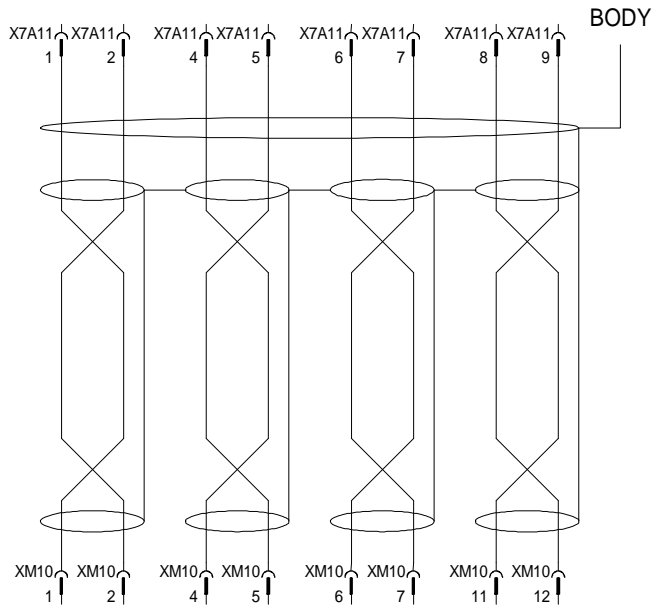
STAR CUT
CONNECTOR : X45
DANCER POTENCIOMETER

INFEED

CUT

X7 CONNECTOR DRIVER

X7 CONNECTOR DRIVER



RESOLVER CONNECTOR MOTOR

RESOLVER CONNECTOR MOTOR

DIBUJADO :	JMS				
VERIFICADO :	JMS				
FECHA CREATION :	02-07-2004	IND	FECHA	MODIFICACION	DES.

SC52/127

Documento n° : 1270 - 440

STARCUT
CONNECTOR : RESOLVERS
RESOLVER CONNECTORS